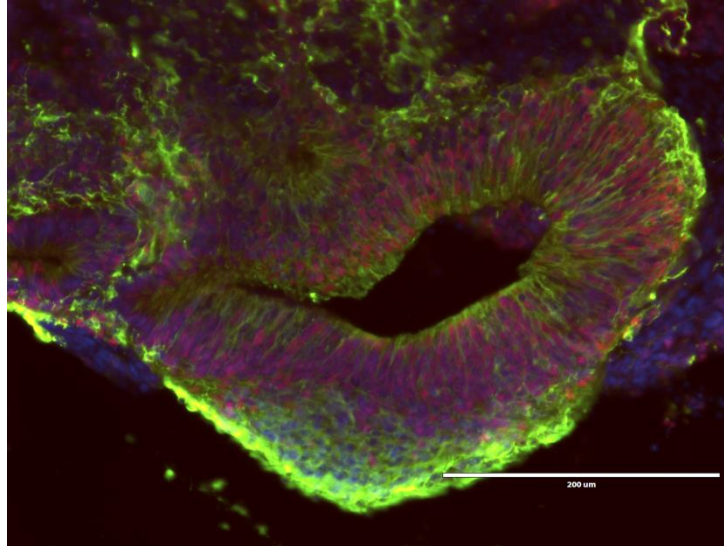


# Café Scientifique Headingley

Monday 10<sup>th</sup> October 2016 at 7:30pm

**Speaker:** Ryan Mathew

**Title:** Growing Mini-Brains to Help Understand Cancer



## Outline:

Stem cells can be used to create small (2-4mm) 3D structures that resemble human brains in early development. This technology is enabling the study of developmental disorders of the brain, but could also provide a model for studying brain tumours. We want to make the model personalised so we're using ground-breaking technology to reprogram brain tumour cells - from patients undergoing surgery at Leeds - into stem cells. Combining these approaches allows us to grow mini-brains from these patient-derived reprogrammed stem cells. It is hoped that this pioneering mini-brain model will allow us to study the biology of brain tumours and act as a platform for personalised drug testing.

**Biog:** Ryan Mathew completed his training as a Neurosurgeon at Leeds General Infirmary. He has a specialist interest in Neuro-Oncology, in particular Low Grade Gliomas and Awake Surgery. He is currently a Cancer Research UK funded Clinical Research Fellow at the Cancer Research UK Leeds Centre where he is undertaking a PhD into brain tumour stem cells and modelling. He works in the Wurdak Group. On completion of his PhD, he hopes to be appointed as a Consultant Academic Neurosurgeon, dividing his time between clinical and lab-based research work.

**Venue:** The New Headingley Club 56 St Michael's Rd., Leeds LS6 3BG

**Time:** Club opens at 7:00pm for drinks & the room at 7:30; talk begins promptly at 7:45pm

**Entry:** Donation please for room hire and expenses: **£3 at the door**



Café Scientifique Headingley is a programme run under the auspices of the Headingley Development Trust [www.headingleydevelopmenttrust.org.uk](http://www.headingleydevelopmenttrust.org.uk)