

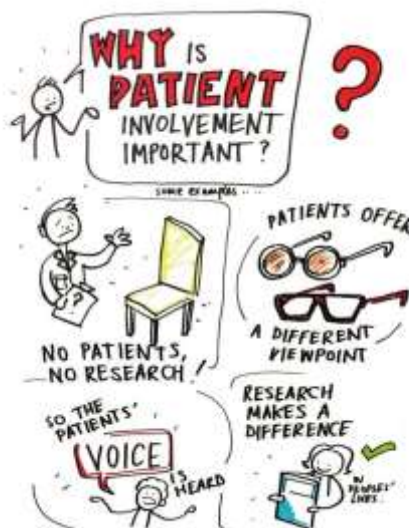
Café Scientifique Headingley

Monday 13 March 2023

Research in the NHS, why do we do it?

Would you do it?

By Amy Rebane and Julie Corrigan



Outline: The research of today, is the treatment of tomorrow. Research (also referred to as Clinical Trials/Studies) helps those working in the medical profession to treat particular illnesses using new and innovative treatments. The overarching body for health and social research in England is the National Institute for Health and Social Research (NIHR) - often seen as the research arm of the NHS. An important part of research for the NIHR is Patient and Public Involvement and Engagement (PPIE) which is where members of the public are actively involved in shaping research projects in research organisations.

Amy Rebane works as Patient and Public Involvement/Engagement/Participation (PPIEP) Manager for the NIHR Leeds Biomedical Research Centre (BRC). Amy supports researchers at the BRC in all elements of their PPIEP activity. This ranges from bringing Patient/Public Partners together to participate in focus groups; arranging events to share research updates and contributing to research grant development. Amy's portfolio of PPIEP includes musculoskeletal, Long-Covid, Cancer and Tremor research. Across the University of Leeds and Leeds Teaching Hospitals NHS Trust Amy is involved in PPIEP strategy development, advocating for the value of lived experience and the joining-up of approaches to deliver consistent and clear PPIEP opportunities for Patient and Public Partners.

Julie Corrigan is a Cardiac Physiologist and Manager predominantly based at Leeds General Infirmary. Her main role is as the Operations Manager for the Leeds Clinical Research Facility (LCRF) which has research facilities at the LGI, St James and Chapel Allerton for both adults and children. Julie set-up and supports the Cardiovascular Patient and Public Involvement/Engagement/Participation (PPIEP) group who meet every 2 months to support, advise and contribute to shape Cardiovascular research. In her career spanning over 40 years, the changes to how Cardiac patients are treated have been massive - all brought about by research. Some PPIEP members are ex-patients who want to 'give something back', others are just interested in clinical research.

Venue: The New Headingley Club, 56 St Michaels Road, LS6 3BG

Time: Room opens 7:30pm, the presentation begins promptly at 7:45pm

Entry: Donation please, for room hire and expenses: £4 at the door



Café Scientifique Headingley <http://cafesci.hdtleeds.org.uk/> is a programme run under the auspices of the Headingley Development Trust www.headingleydevelopmenttrust.org.uk