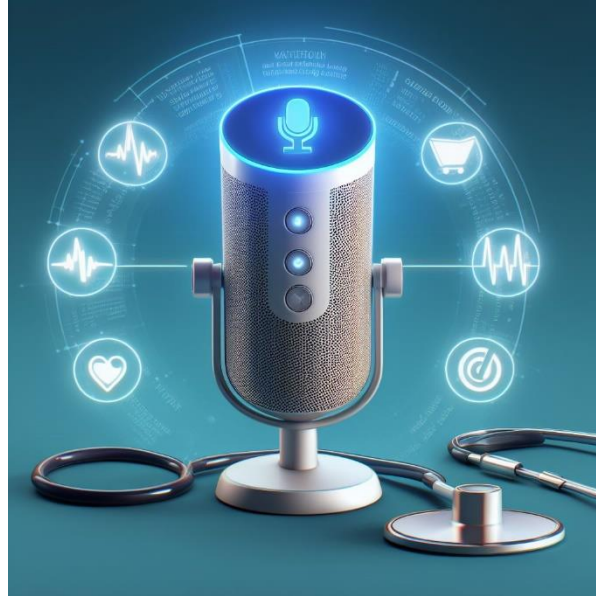


Café Scientifique Headingley

Monday 12th February 2024

Dr Alexa: detecting disease from your voice

By Mary Paterson



Outline: Many diseases can affect the way we speak from throat cancer to dementia. With over half of UK households having a voice assistant could we use these devices in the early detection and monitoring of speech-related disorders? In this talk, we will discuss the possibilities and limitations of AI for the detection of speech-related disorders. We will also consider the ethical implications of the use of AI in healthcare.

Speaker: *Mary Paterson is a final year PhD student at the University of Leeds, in the Centre for Doctoral Training (CDT) for AI for Medical Diagnosis and Care. She works in the detection of throat cancer from patient speech.*

Venue: *The New Headingley Club, 56 St Michaels Road, LS6 3BG*

Time: *Room opens 7:30pm, Talk begins promptly at 7:45pm*

Entry: *Donation please for room hire and expenses: £4 at the door*

Café Scientifique Headingley <http://cafesci.hdtleeds.org.uk/> is a programme run under the auspices of the Headingley Development Trust www.headingleydevelopmenttrust.org.uk

