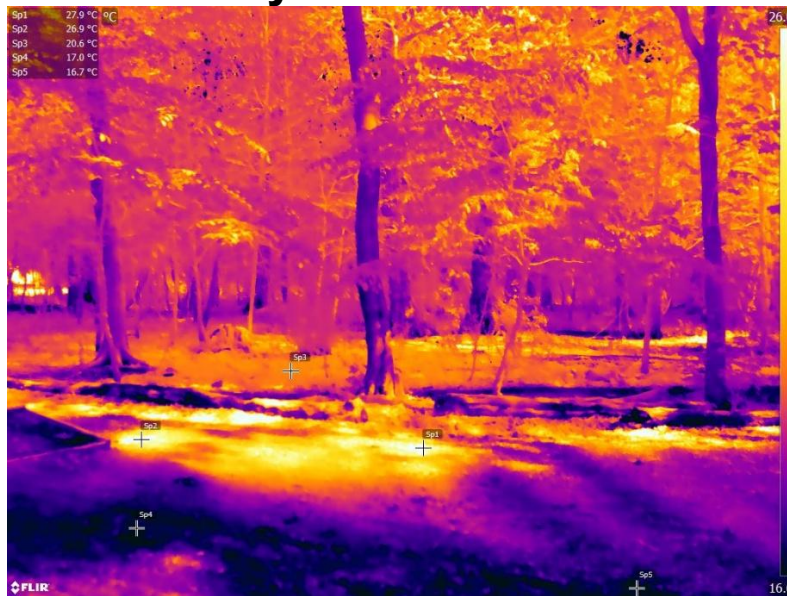


Café Scientifique Headingley

Monday 9th March 2026

Comfort in the Canopy: how urban woodlands help to keep us cool

By: Jim Parker



Outline: Data from a high spatial and temporal resolution microclimate sensor network will be presented, which help to quantify the impact that different types of green space have on human comfort in our urban environment. This work was undertaken as part of a Fellowship that formed part of the Future of UK Treescapes programme, funded through the Natural Environment Research Council. This research in Leeds city region shows urban treescapes are on average 1.4 °C cooler than surrounding grey spaces, and up to 5 °C cooler during heatwaves.

Speaker: Jim Parker specialises in building energy modelling and the urban environment. As a Reader working in the Leeds Sustainability Institute, Jim leads the group's work on Sustainable Urban Environments. He led the development of Sensing Leeds, an open-access environmental visualisation and data platform, with partners from the University of Leeds, Leeds City Council and SimAnalytica. Access the portal here: <https://platform.compassengine.com/lite/sensing-leeds>

Venue: The New Headingley Club, 56 St Michaels Road, LS6 3BG

Time: Room opens 7:30pm, Talk begins promptly at 7:45pm

Entry: Donation please for room hire and expenses: £4 at the door



Café Scientifique Headingley <http://cafesci.hdtleeds.org.uk/>
is a programme run under the auspices of the Headingley Development Trust
www.headingleydevelopmenttrust.org.uk